

# POWER RANGERS

Legislation and cries for conservation lead the push for every home to have control systems and devices, whether installed through professionals or DIY.



1

## 1 - LEVITON® MFG.

The Vizia RF+™ is a redesigned line of dimmer, fan speed, and Z-Wave®-enabled controls. The horizontally oriented Dim/Bright bar and LED brightness display show intensity levels incrementally from left to right rather than up and down. The family matches Decora Plus™ screwless wallplates and Decora® wiring devices.

Through a new relationship with ViewSonic Corp., a touch screen embedded with Superna® home control interface software expands Vizia RF+ to whole house automation, covering home entertainment, security cameras, and lighting, all through radio frequency.

(800) 323-8920

[info@leviton.com](mailto:info@leviton.com)

## 2 - HAI® (HOME AUTOMATION INC.)

The OmniTouch line has been expanded with portable options. New touch screens come with built-in Wi-Fi™ and TFT active matrix LCD SVGA resolution displays with soft keyboard support. Both the 8P and 10P models come with customizable graphics and foreign language options, as well as full Internet access for RSS feeds such as weather and traffic.

The screens organize lights and small appliances, security, and temperature settings, pool and spa specifications, ventilation, decorative lighting, whole home audio systems, and surveillance video.

(800) 229-7256

[homeauto.com](http://homeauto.com)



2

### 3 - CENTRALITE SYSTEMS

The JetStream™ wireless RF system is designed for new construction and retrofit applications. The intelligent dimmers are powered by traditional wiring, but communicate with each other using RF technology. The system provides all of the functionality of a high-end lighting control system with support for 200+ devices, 512 dimming levels, and the ability to compose 100 scenes and 50 timed events.

The dimmers, keypads, lamp modules, car remotes, tabletop keypads, and third-party interfaces are available individually. A pre-configured starter kit – the Launch PAK – contains five dimmers plus a remote and is pre-loaded with four scenes: Welcome, Goodbye, All On, and All Off.

(877) 466-5483

[centralite.com](http://centralite.com)

### 4 - LUTRON® ELECTRONICS

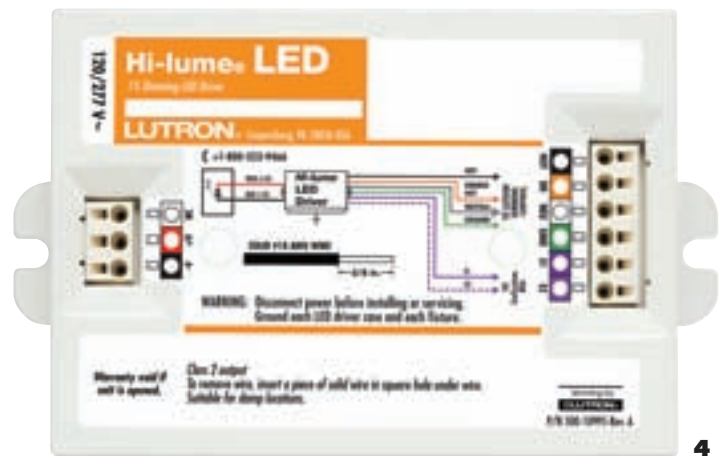
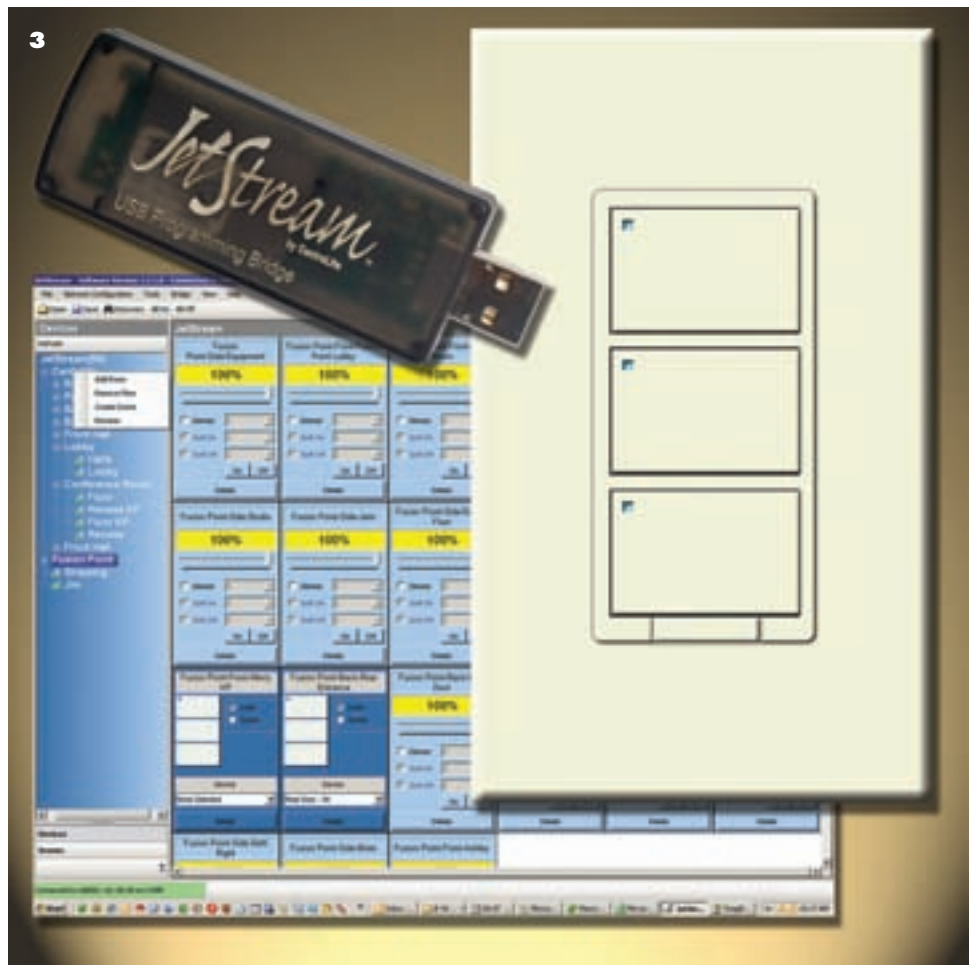
The Hi-lume® LED driver provides energy-efficient dimming from 100 to 1 percent of light output. It is compatible with a variety of products including digital control with EcoSystem™, GRAFIK Eye® QS, and Quantum™ as well as with three-wire controls such as VierTI™, NovaI™, and Maestro® dimmers, plus the GP series of panels. Intended for downlighting, it may be pre-installed by fixture manufacturers.

More functions have been added to HomeWorks® software. illumination 1.40 allows for the simple designation and tracking of AFCIs (arc fault circuit interrupters). A new module provides control of 0-10V lighting to manage LED and fluorescent loads, and keypad buttons can now be programmed to reduce lighting zones by a specific percentage to save energy. Also joining HomeWorks is an in-line lamp socket module that mounts directly under a lampshade for dimming incandescent or halogen portables as well as turning fluorescent sources on and off.

For residential installations, the AuroRa® wireless lighting control system is pre-programmed and available in three options: basic, security, and switch packages. The top-of-the-line switch package contains: three dimmers; two switches to turn lights on and off; five wallplate inserts for use with large-opening designer styles; one tabletop master control that operates inside the home; one wireless controller for inside the car; and one central antenna ensuring RF communication among the devices.

(877) 258-8766

[lutron.com](http://lutron.com)



### 5 - WESTEK®

The SLC6 screw-in CFL control accommodates fluorescents as well as incandescents and automatically turns lights on at dusk and off at a user-programmed time. The digitally programmable circuit permits homeowners to shut lights off after two, five, or eight hours to meet their needs or simply at dawn.

Westek is a brand of AmerTac™.

[amertac.com](http://amertac.com)

### 6 - WATTSTOPPER/LEGRAND®

The RD-200 dimming wall switch/vacancy sensor helps homeowners achieve pleasing light levels while maximizing energy savings. Complying with California Title 24, the RD-200 replaces a standard switch; users manually turn the lights on only when they are needed. A single push button makes operation easy, eliminating fragile slide controls and removable knobs, and dimming levels may be adjusted manually. It is available in four decorator colors with matching lenses.

The Miro key fob scene controller permits remote, one-touch operation when entering or exiting a dwelling. It can activate three different lighting scenes from a range of 100 feet or more. A unique house code distinguishes communications and will not interfere with neighbors' systems.

(800) 879-8585

[wattstopper.com](http://wattstopper.com)

### 7 - PASS & SEYMOUR/LEGRAND®

A dimmer has been added to the Hammond family of lighting and fan speed controls. Designed for use with 120-volt, two-wire dimming ballasts, it has a captive paddle on/off air-gap switch, a pre-set dimmer slide, indicator light, and EMI/RFI reduction circuitry. The fluorescent version is designed to control Advance Mark X and similar ballasts.

(800) 776-4035

[passandseymour.com](http://passandseymour.com)





8



9

#### 8 - CRESTRON®

The Green Light™ family includes a management module and graphic user interface (GUI) to provide real-time monitoring of lights, shades, and thermostats. Pre-sets such as the “green” setting are designed to deliver energy and cost savings without compromising comfort and convenience. As groups of lights are adjusted, the effects on lamp life, energy consumption, carbon output, and costs can be viewed graphically and quantitatively. The system connects to the Internet and retrieves the current price per kilowatt from the local utility to determine accurate costs and savings over selected times and durations.

(800) 237-2041

[crestron.com](http://crestron.com)

#### 9 - LAMAR LIGHTING

Part of the Occu-smart® series, the Switch-smart for fluorescent luminaires is self-powered and wireless. It can be installed anywhere and on any surface and has a range of up to 150 feet. The receiver is factory-installed in the luminaire and pre-programmed for the switch, which can be easily field-adjusted to operate multiple fixtures.

The component helps meet LEED® Credit 6.1 for controllability of lighting systems.

(800) 724-7743

[lamarlighting.com](http://lamarlighting.com)

10



**10 - AD HOC ELECTRONICS**  
ILLUMRA™ wireless controls for temperature, occupancy, and lighting are self-powered using the EnOcean® protocol. The system consists of a receiver (120-, 230-, or 277-volt) that is wired to the power source plus wireless transmitters for light switches or motion, temperature, or light sensors. The transmitters create their own power from a micro-generator that converts each switch-press into a small amount of electricity, or harvests solar energy collected through a small cell from ambient light sources.

The most popular features are a three-way light/fan combo and a master control that powers down the entire house as the owner exits. The system is also applicable to commercial and hospitality spaces.

(801) 225-2226

[illumra.com](http://illumra.com)

11



**11 - SCHNEIDER ELECTRIC**  
The Square D® wall-mounted occupancy sensors are now available in passive infrared (PIR) and ultrasonic models. The PIR has three interchangeable lenses for custom coverage patterns of corridors; the ultrasonic version offers a 180° field of view and up to 1,000 square feet of coverage for open office areas, stairwells, as well as offices and residences without flat ceilings. A dual-technology version incorporates both. An integral light-level sensor prevents lights from turning on when sufficient natural light is present, however front-located adjustments enable users to set sensitivity and time delays. In addition, an isolated relay can be used with building automation, security, and HVAC systems.

(888) 778-2733

[squaredlightingcontrol.com](http://squaredlightingcontrol.com)